



RAYMON ELECTRONICS, INC.

# **TLC-S9**

# **User Manual**

## Table of Contents

---

<b>Chapter 1 Preface</b> .....	1
1.1 Receiving and Inspection.....	1
1.2 Features.....	1
<b>Chapter 2 Connections and wiring</b> .....	2
2.1 Connections.....	2
2.2 Wiring Methods.....	2
<b>Chapter 3 Display and operation</b> .....	3
3.1 Panel description.....	3
3.2.1 LCD.....	3
3.2.2 Memory card slot.....	3
3.2.3 Control buttons.....	4
3.2.4 Status LEDs.....	4

### 1.1 Receiving and Inspection

All Raymon TLC have gone through rigorous quality control tests at factory prior to ship. After receiving TLC-S9, please check that the package includes :

- 1pcs TLC-S9
- 1User manual
- 1pcs Software CD

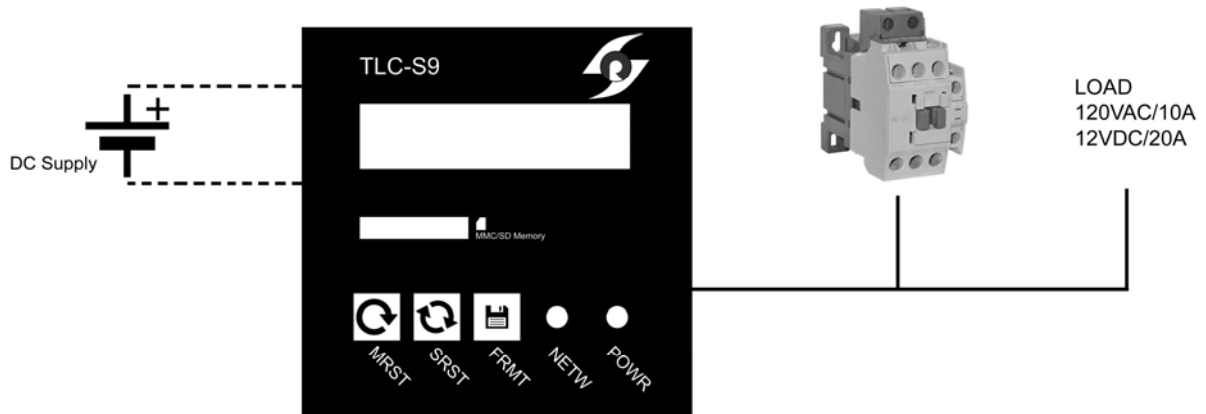
### 1.2 Features

- There are 8 NO outputs to turning on or off electrical devices.
- 12VDC/5A external power needed.
- DIN rail mount.

### 2.1 Connections

In Figure 2.1, it briefly explains the connection of supply and loads.

Figure 2.1



### Wiring Notes

Please observe the following wiring notes while performing wiring and touching any electrical connections on the device.

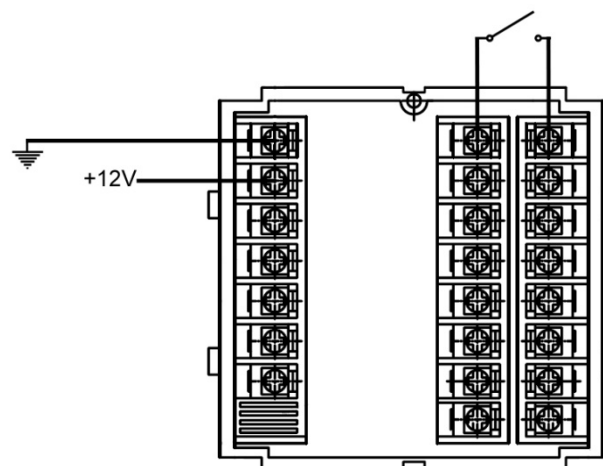
- Ensure to check if the power supply and wiring of the "power" terminals is correct.
- Please use shielded twisted-pair cables for wiring to prevent voltage coupling and eliminate electrical noise and interference.

### 2.2 Wiring Methods

Each TLC-S9 device has 8 NO output. These outputs can either directly connect to loads or in a special situation through a contactor able to drive heavy loads.

In Figure 2.2, each connection has been explained.

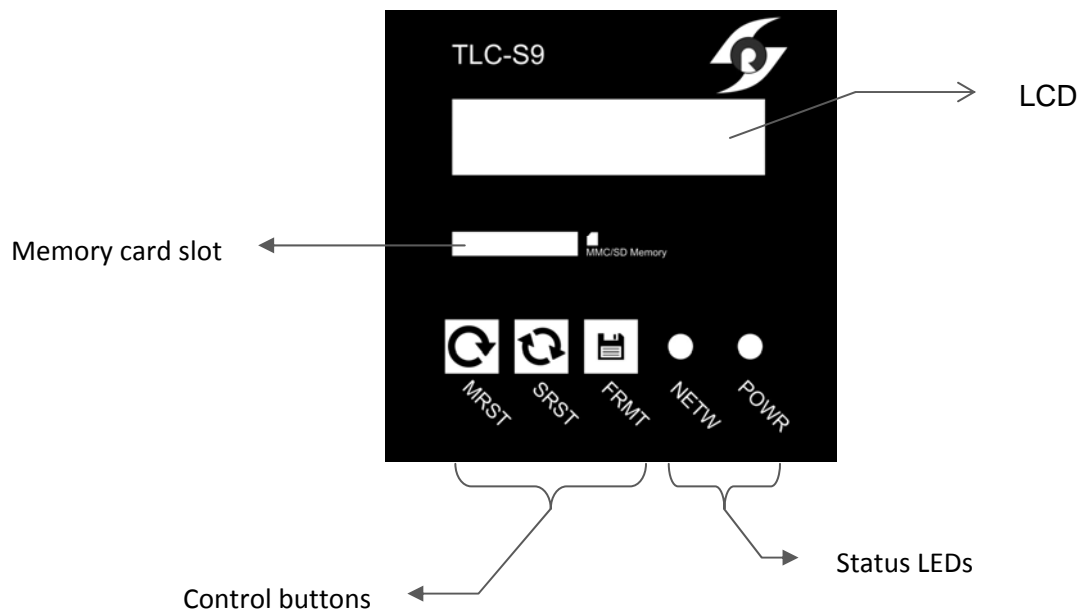
Figure 2.2



### 3.1 Panel description

In Figure 3.1, each part of the panel has been explained.

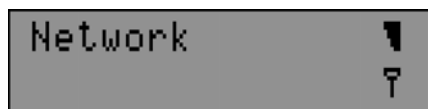
Figure 3.1



#### 3.2.1 LCD

It shows the proper information of each procedure. Normally shows Antenna and current network name.(Figure 3.2)

Figure 3.2



#### 3.2.2 Memory card slot

This device can save received configuration in MMC/SD memory card, Including date, time and received configuration string.

### 3.2.3 Control buttons

TLC device has three control buttons :

-MRST (Module Reset) :

In some situation its necessary to reset the device because of the error due local network problems.

-SRST (SIM card Reset) :

In some situation its necessary to reset the SIM card because of the error due local network problems.

-FRMT (Format memory card) :

This botton is used to format the memory card internally without another device like computer etc.

### 3.2.4 Status LEDs

To show the network and supply status, this device uses to LEDs :

**-NETW :**

It shows the status of local network. The working state of this LED is listed in the following table :

State	Module function
Off	Module is not running
64ms On/ 800ms Off	Module does not find the network
64ms On/ 3000ms Off	Module find the network

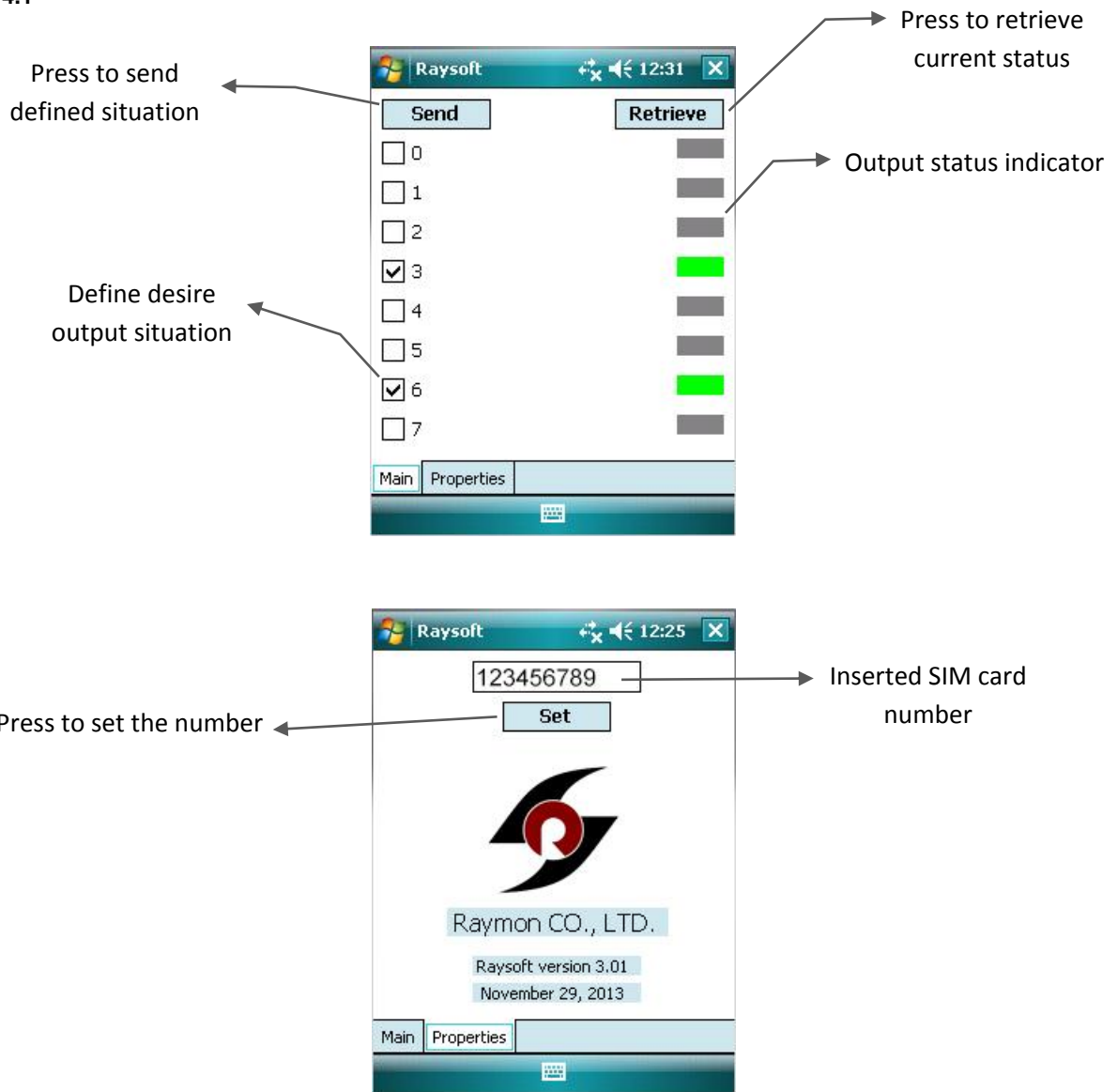
**-POWR :**

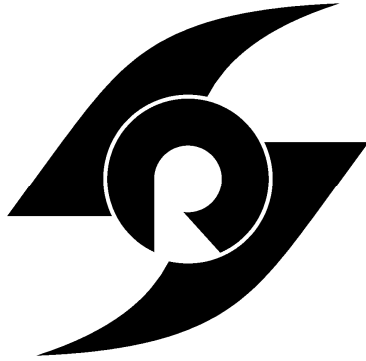
This LED shows the state of module, whether is On or Off.

4.1 Software description

Raysoft has a simple and user friendly structure. Each part of the software shown in Figure 4.1.

Figure 4.1





**Raymon Electronics CO., LTD.**

**[www.RS-TRONICS.com](http://www.RS-TRONICS.com)**